



Engineering a better tomorrow

Corporate Office

Shrachi Tower, 686 Anandapur, Eastern Metropolitan Bypass,
East Kolkata Twp, Kolkata, West Bengal 700107
Telephone +91 33 4984 4984 | enquiry@shrachi.com

Administrative Office

BTL EPC LTD , 2, Jessore Road, Dum Dum, Kolkata-700028
Telephone +91 33 2550 2487

www.btlepcltd.com | Follow us on [f](#) [in](#)



Scan the QR code
to explore
future possibilities



ENGINEERING A BETTER TOMORROW



ABOUT US

Company Profile

50 glorious years and we have emerged as a multi disciplinary EPC group with diverse interests. Our engineering division includes manufacturing of highly engineered and precision products along with process equipment across industries and projects.

Vision

To be a leading engineering company committed to continuously enhancing shareholder value through execution excellence.

Mission

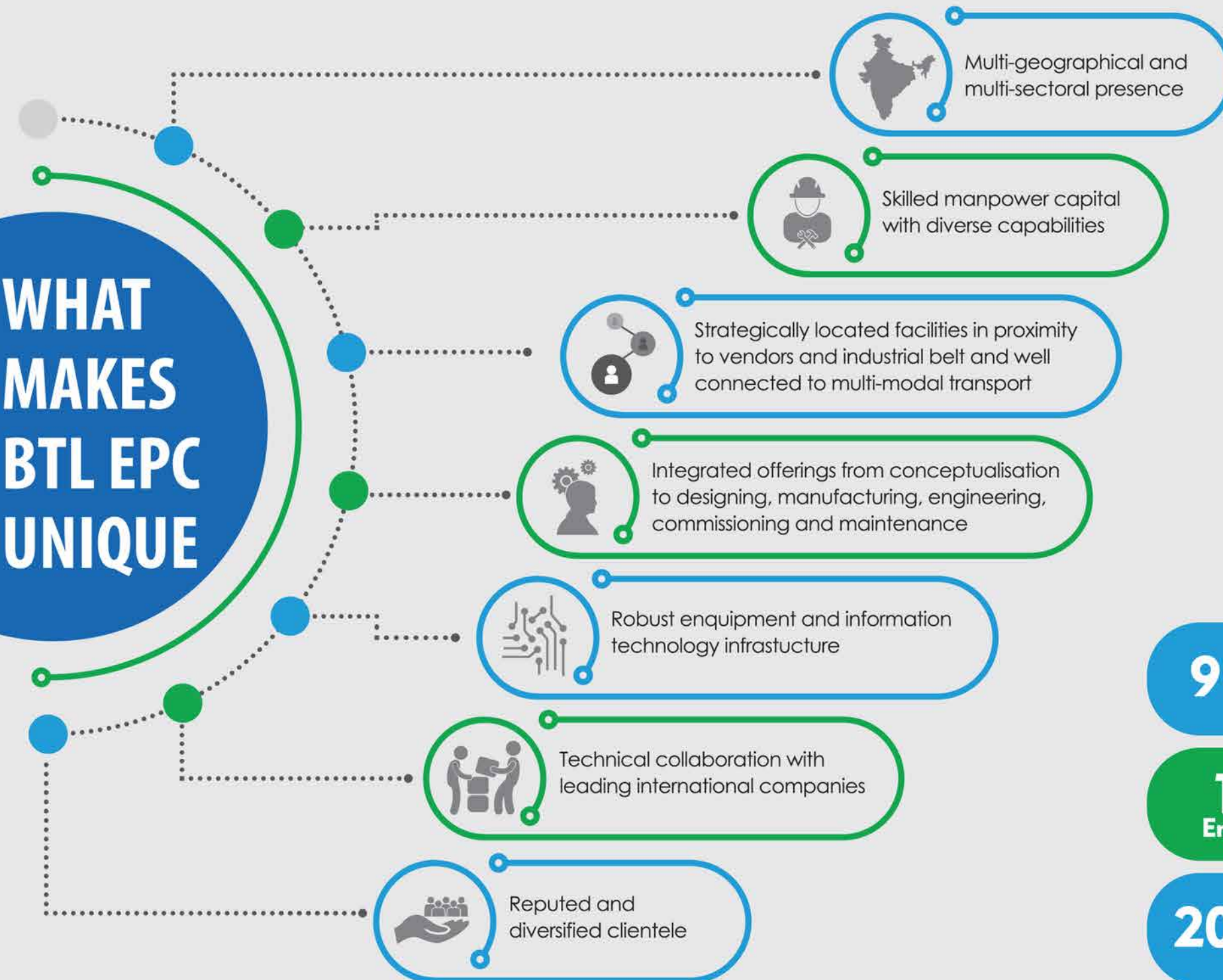
- Be the Employer of choice
- Attract, retain and nurture talent
- Strive for Improving operational efficiency through BPR
- Adopt leading practices for continuous improvement in people, process and technology
- Achieve business growth through appropriate collaborations and tie-ups
- Build trust by delivering on customer promise through quality and timeliness

Manufacturing Infrastructure

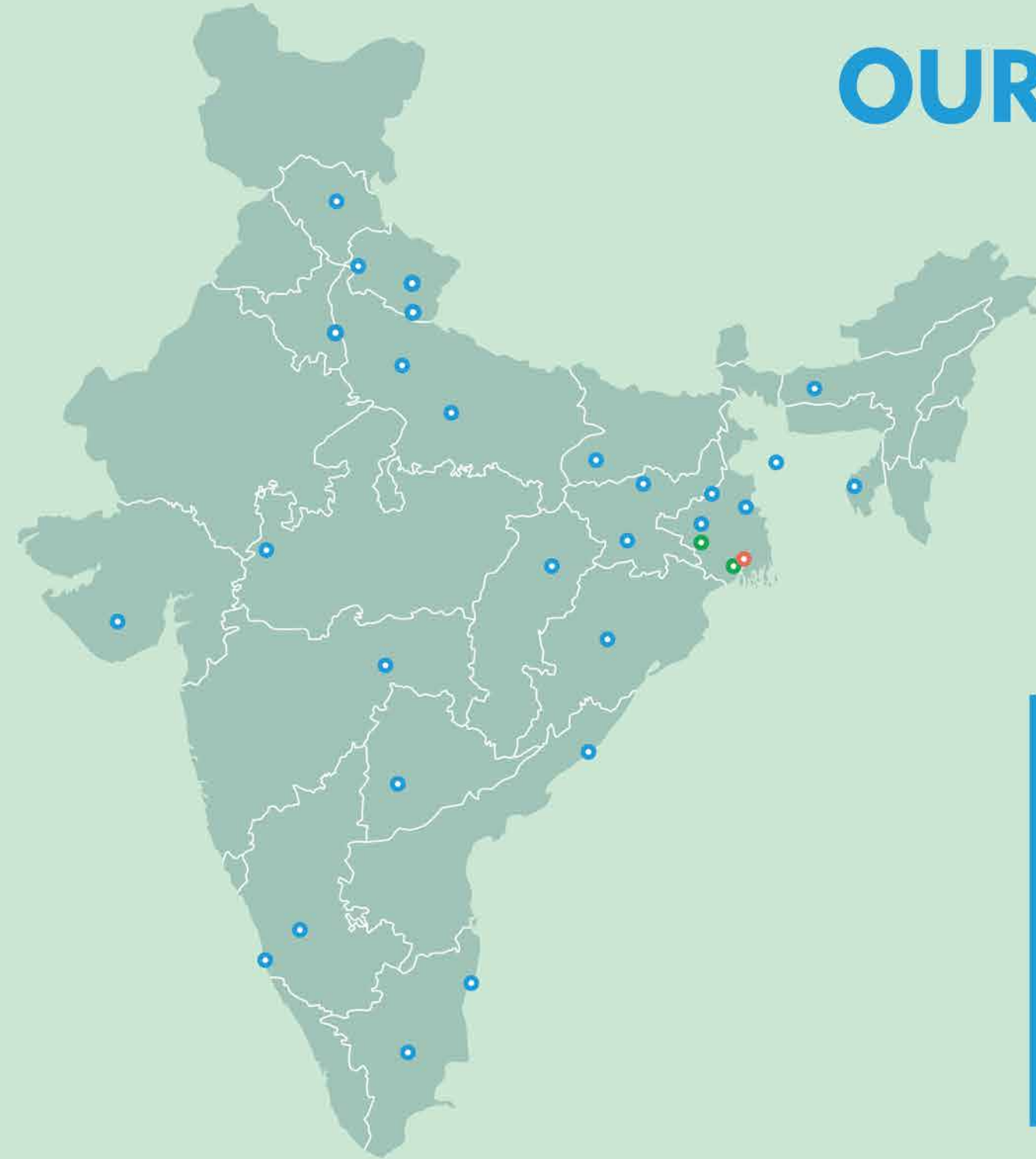
We have state-of-the-art manufacturing facilities and ISO: 9001, ISO: 14001, OHSAS: 18001, IBR, CCOE and ASME accreditations. Registered with Controllerate of Quality Assurance (Engg.) Pune under DGQA – New Delhi, we are associated with the Ministry of Defense for over 40 years, Delhi.

Total Manufacturing Area: 4,50,000 sq.ft. | 4 Workshops: 3 units in Kolkata , 1 unit in Durgapur, WB.

WHAT MAKES BTL EPC UNIQUE



OUR PRESENCE



● Head Office

● Engineering manufacturing units:
Kolkata & Durgapur

● Ongoing Engineering Projects:
Ichapour, Dehradun, Ranikhet, Panagarh, Nagamar,
Kalpakkam, Wonakbari, Unchahar, Mangalore,
Hazaribagh, Bokaro, Chas, North Karanpura,
Bangladesh, Barauni, Himachal Pradesh,
Visakhapatnam Steel Plant, Angul, Noamundi, Babrala,
Nasik, Rourkela, Nagamar, Durgapur, Shahjahanpur,
West Bokaro, Damanjodi, Bolani, IISCO, Farakka,
Bongaigaon, Guwahati, Haldia, Delhi, Paradip,
Hydrabad, Agartala, Uttarakhand, Himachal Pradesh.



BULK MATERIAL
HANDLING SYSTEM



COAL CHEMICAL
DIVISION



SPECIAL BUSINESS
DIVISION



POWER
TRANSMISSION



WATER
TREATMENT



ROOF TOP AND
GROUND MOUNTED
SOLAR PLANT



FIELD ENGINEERING
EQUIPMENT FOR
INDIAN ARMY



THERMAL
POWER PLANT
AGGREGATES

DIVISIONS OF BTL EPC

BULK MATERIAL HANDLING SYSTEM

BULK MATERIAL HANDLING EQUIPMENT

Belt Conveyor



Pipe Conveyor



Truck & Wagon Loader



Travelling Tripper



Gear Box



Internal Scraper



Conveyor Idlers



Screw Conveyor



Retractable Conveyor



Flap Gate



Mechanical Vibrating & Reciprocating Feeder



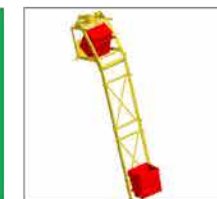
Telescopic Chute



Paddle Feeder



Skip Hoist



Chain Conveyor



Shuttle Conveyor



Bucket Elevator



Rack & Pinion Gate



Rod Gate



Pulleys



CURRENT PROJECTS



Coal Handling Plant for BIFPCL Bangladesh Maitree STPP along with Belt Conveyor, Crushers etc having capacity of 3740 TPH.

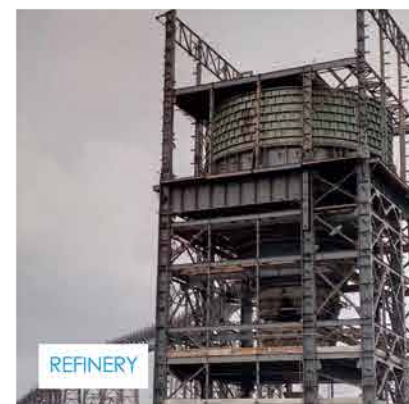
Coal Handling Plant at NBPPL Unchahar along with Stacker, Crusher, Screen etc. with Conveyor capacity 1760 TPH.



Coal Handling Plant at BHEL Barauni.



Coal and Ore Handling System at NMDC Nagarnar with Conveyor Capacity up to 3240 TPH.



Wagon Loading & Pipe Conveyor System for Pet Coke silos at MRPL Mangalore with Belt Conveyor capacity upto 500 TPH.

Coal Handling Plant at GSECL Wanakbori with Conveyor capacity upto 1400 TPH.



PAST PROJECTS



Coal Handling Plant at HNPCL having Conveying & Crushing Capacity: 1680 TPH, BW: 1600 mm length: 4.6 kms.

Pet Coke Handling System IOCL at Paradip Refinery having Conveying capacity 900 TPH including pipe Conveyor & Stacker cum reclaimer.



Supply of Crusher & Apron Feeder at NALCO Damonjodi Mines.

Raw Material Handling System at SAIL Durgapur having Conveying capacity 1200 TPH and BW:200mm including Screen and Crusher.



Primary Crushing Plant at TATA Steel West Bokaro with Conveyor capacity 900 TPH.

Downhill Conveyor System at SAIL Meghahatuburu with Conveyor Capacity: 1200 TPH.



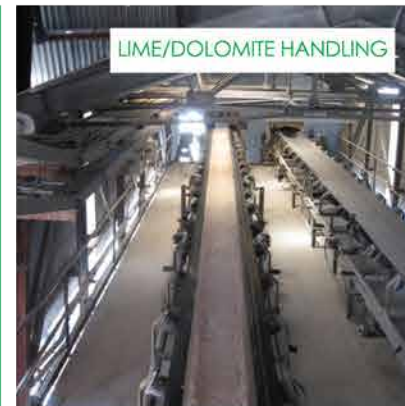
- **Coal Handling Plant** at NTPC North Karanpura with Conveyor capacity upto 3245 TPH.

PAST PROJECTS



Coal Handling Plant
at NTPC Farakka STPS
with Conveyor
capacity : 1600 TPH.

**Belt Conveyor
System for Bauxite
& Lime Handling
Plant** at NALCO
Damanjodi with
Conveyor capacity :
1000 TPH.

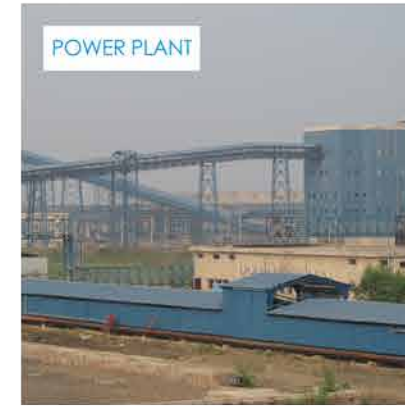


Coal Handling Plant
at CESC ,
Budge Budge
with Conveyor
capacity : 800 TPH
along with Stacker.



**Supply and erection
of Stock House
Belt Conveyor**
at IISCO- Burnpur
with Conveyor
capacity : 3600 TPH.

PAST PROJECTS



Coal Handling Plant
at CESC Haldia
Energy Ltd. with
Conveyor
capacity: 1100 TPH.

**Baggage Handling
Plant** TATA Chemicals
Ltd., Babrala with
Conveyor capacity:
75 BPH, 90 TPH.



**Coal Storage
& Coal Handling
System** at NALCO
ANGUL C.P.P
with Conveyor
capacity : 600 TPH.



**Wagon Loading &
Associated Item**
at RINL
Visakhapatnam,
Jaggayyapeta
Lime Stone Mines.

COAL CHEMICAL DIVISION

COAL & CHEMICAL EQUIPMENT

Agitator
Tank



Distillation /
Process
Column



Stack



Fly Ash
Silo



Steel Arch
Bridge



- FBD (Fluid Bed Dryer)
- Condensate Tank
- Recuperator
- Fly Ash Silo
- Stack
- Saturator
- Primary Gas Cooler
- Decanter
- Continuous Digesters
- Furnace & Furnace Equipment
- Absorber
- Storage Tanks
- Pressure Vessels
- Shell & Tube Heat Exchangers
- Columns (SS/MS)

PRODUCT



**Supply of 35M
Column** for
IOCL, Paradip.



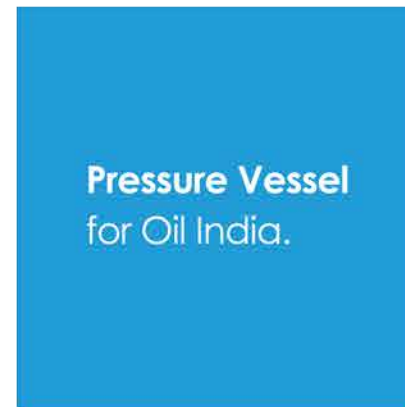
Heat Exchangers
for IOCL, Barauni.



Heat Exchangers
for IOCL, Barauni.



Process Column
for IOCL, Barauni.



Pressure Vessel
for Oil India.



Pressure Vessel
for Oil India.

CURRENT PROJECT



**Ammonium
Suplhate Plant**
at SAIL, Bokaro.



Denitration Plant
at HWB, Kalpakkam.



**Supply &
Erection of
Electric Driven
Exhaust** at
SAIL, Bokaro.

PAST PROJECT



Benzol Plant
at SAIL, Durgapur.



**Primary Gas
Cooler** at SAIL,
Rourkela.



Tar Decanter
at SAIL, Durgapur.



- **Ammonium Sulphate Recovery Plant** RINL-Visakhapatnam.
- **Stack** at Mitsubishi Chemicals Pvt. Ltd. Haldia.

SPECIAL BUSINESS DIVISION



**Dismantling & EPC
of BOF Gas Holder
at SAIL, Durgapur.**

**Fabrication & Supply
of Steel Arch Bridge**
Total Length
of 142.6m for NCC
Agartala, Katakhal
flyover project.



**10 T Electrosag
Remelting (ESR)
Furnace Metal &
Steel Factory for
Ministry of Defense
at Ichhapur.**

POWER TRANSMISSION



**40.3 km long, 220 KV
transmission line
for PTCUL.**

**43.6 km long, 132 KV
transmission line
for PTCUL.**



- **33kV double circuit transmission line from 33kV substation for HPPTCL.**

WATER TREATMENT

Septage Treatment Plants for JUIDCO at Chas, Hazaribagh and Deogarh.

- EPC of Water Treatment & Distribution.
- EPC of Sewage Treatment & Distribution.



ROOF TOP AND GROUND MOUNTED SOLAR PLANT

**3MW Solar Power
Plant** at MES for
Military Engineering
Services, Panagarh.



FIELD ENGINEERING EQUIPMENT FOR INDIAN ARMY



**Belly Bridge
Components**



**Truck Mounted
Water Purification
Equipment**



**Mat Grounding
Surface
Class 12, 70**

THERMAL POWER PLANT AGGREGATES



**Air Preheater
Basket**

OUR CLIENTS



CONSULTANTS



INSPECTION AGENCIES



OVERSEAS PARTNERS

BTL EPC Ltd. entered into numerous collaborations with leading turnkey and EPC companies to reinforce its credentials and bid for larger projects. Over the years, the company associated with leading organisations engaged in material handling, coal and chemical projects.

